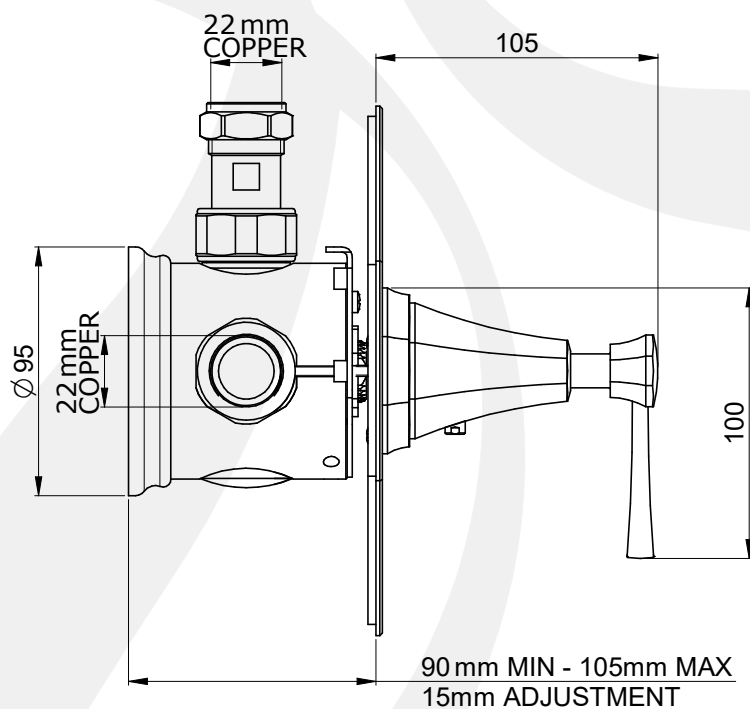
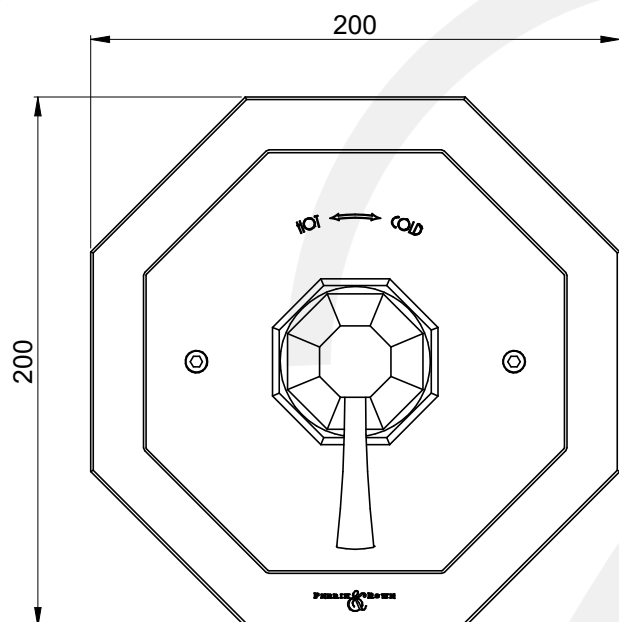
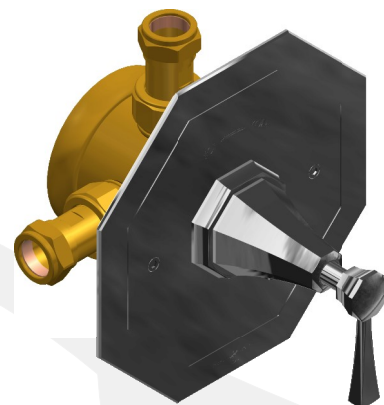


• SPECIFICATION •

• 5157 - DECO CONCEALED LEVER THERMOSTATIC SHOWER MIXER

- HANDCRAFTED IN THE UK
- UNIQUE HANDLE CONSTRUCTION WITH INTEGRAL BEARING RING
- SUPPLIED WITH CHECK VALVES
- IDEALLY INSTALLED IN EQUAL PRESSURE SYSTEMS
- CONTROLS TEMPERATURE ONLY
- FLOW CONTROL VALVE REQUIRED BEFORE ANY OUTLET
- WAX CAPSULE THERMOSTATIC CARTRIDGE
- PRE-SET TO 38°C
- INTEGRAL OVER-RIDE BUTTON



AVAILABLE FINISHES:

- CHROME
- NICKEL
- PEWTER
- POLISHED BRASS
- SATIN BRASS
- GOLD
- ENGLISH BRONZE

• TEMP RANGE:
MIN 1°C / 34°F
MAX 70°C / 158°F

• RECOMMENDED
SUPPLY PRESSURE:
MIN 0.5BAR / 7PSI
MAX 5BAR / 75PSI

• PACKED WEIGHT:
3.5KG

AVAILABLE OPTIONS:

- SECONDARY OUTLET CONNECTOR (5396)
- 19MM EXTENSION KIT (3567)
- 30MM EXTENSION KIT (3568)

FLOW RATES:

- 1 BAR: 20 L/MIN
- 2 BAR: 28 L/MIN
- 3 BAR: 35 L/MIN